



---

**NRWMF**  
**Concept Design Update**

---

June 2018

# Purpose and Process

## Purpose

Progress summary of the current concept design progress and deliverables produced that will inform the cost estimate.

Designs are concept only and not for public release

## Design Process

### Concept Design

#### Inputs:

- Safety Case
- WAC
- Inventory
- Enabling Works
- Community Input

### Preliminary Drawings

#### Inputs:

- Concept Design
- Community Input
- WAC (updated)
- Inventory (updated)
- Safety Case

### Detailed Drawings

#### Inputs:

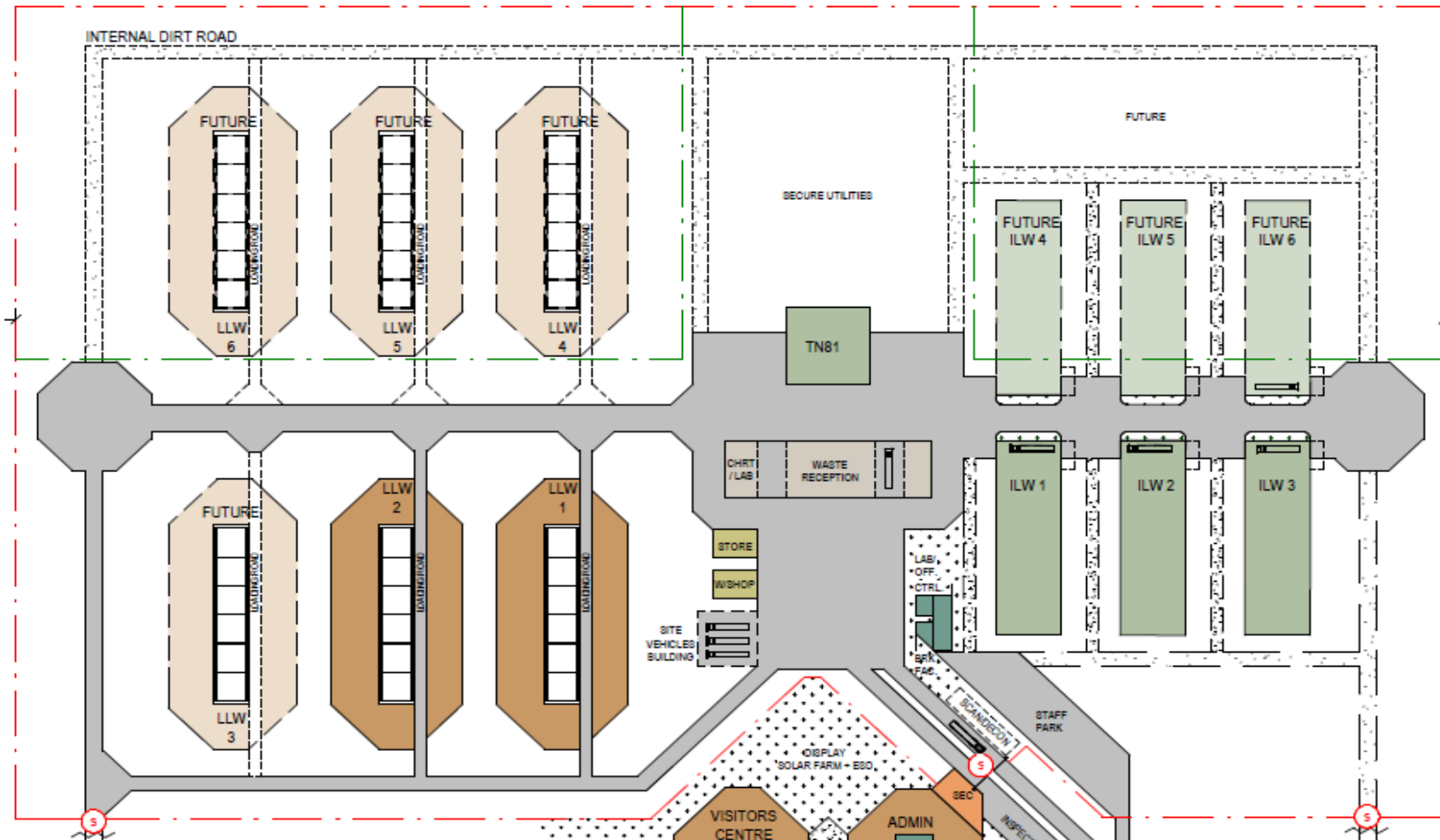
- Preliminary Drawings
- WAC (updated)
- Inventory (updated)
- Safety Case

### Construction

#### Inputs:

- Detailed Drawings

# Site Plan (secure area)



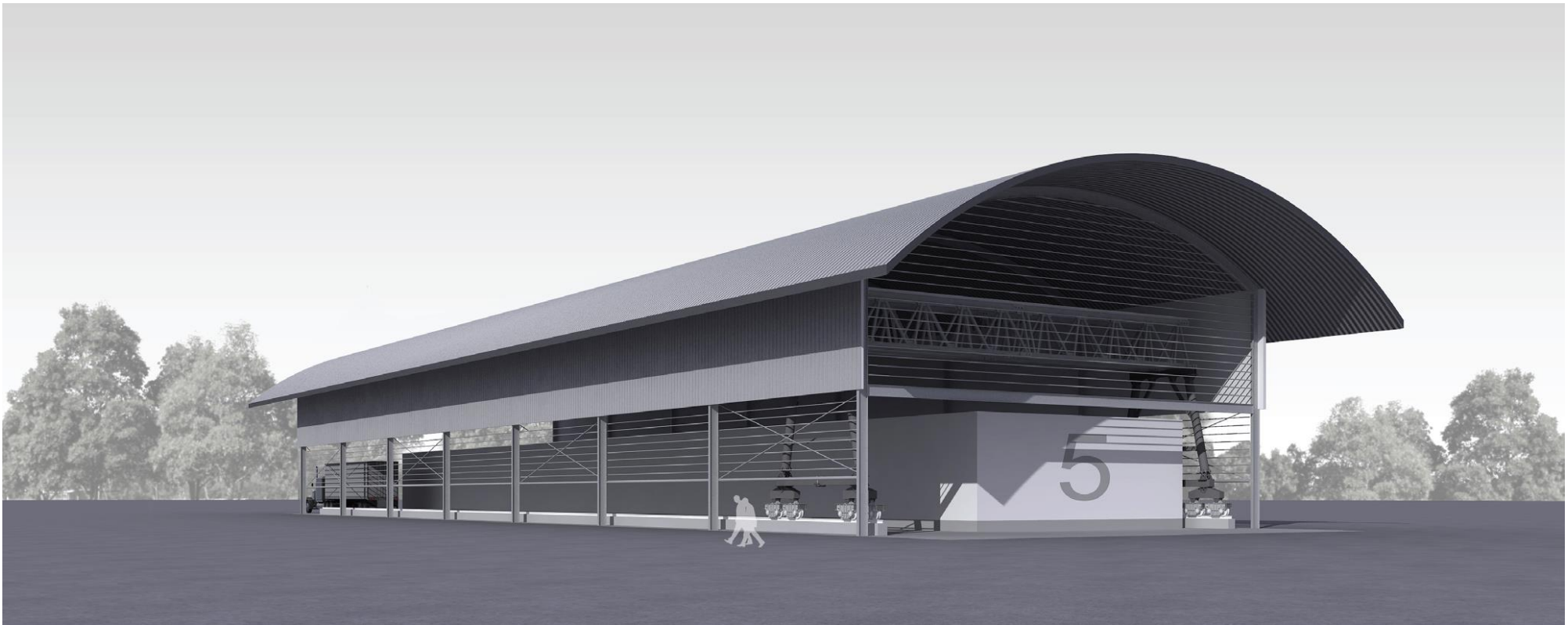
# NRWMF – Concept Design

## ILW Storage Facility



# NRWMF – Concept Design

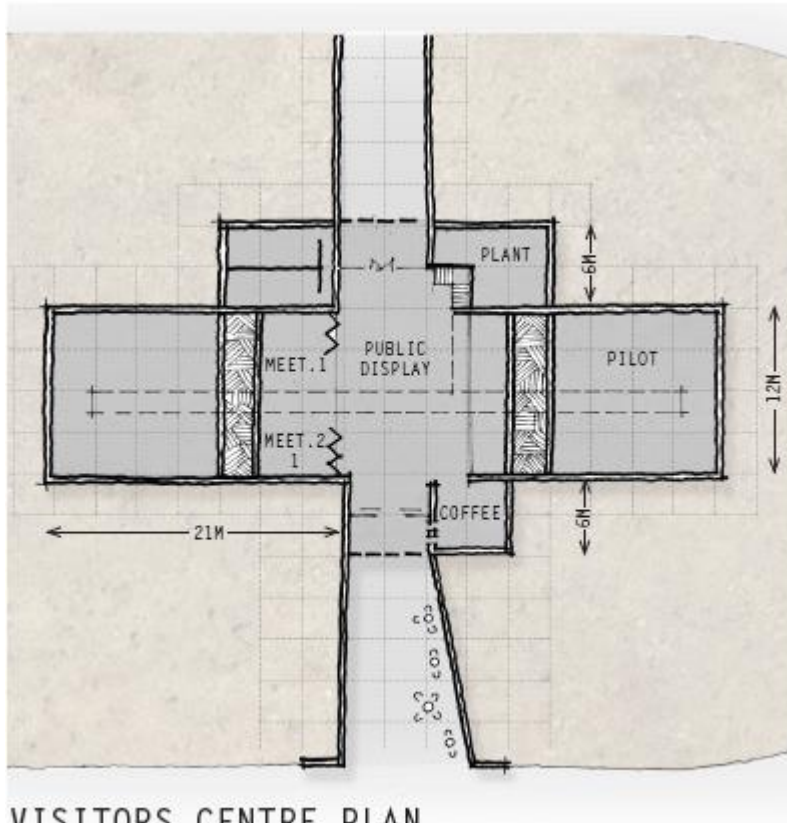
## LLW Disposal Vault



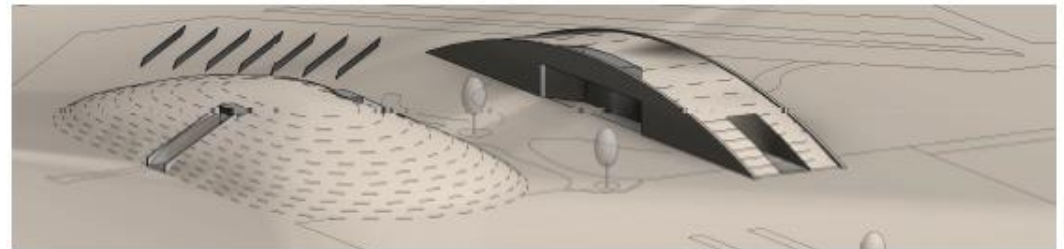


# NRWMF – Concept Design

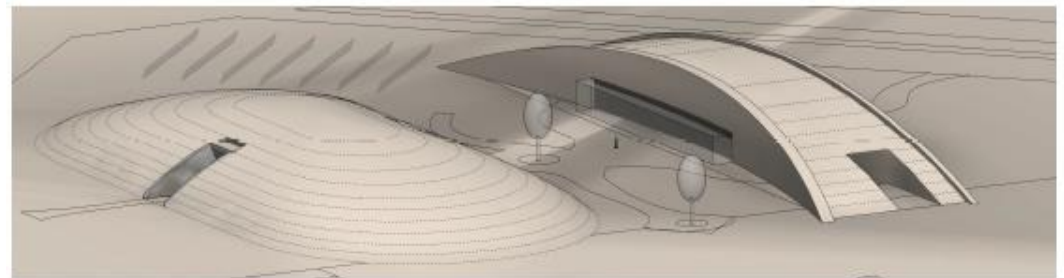
## Visitor and Administration Centres



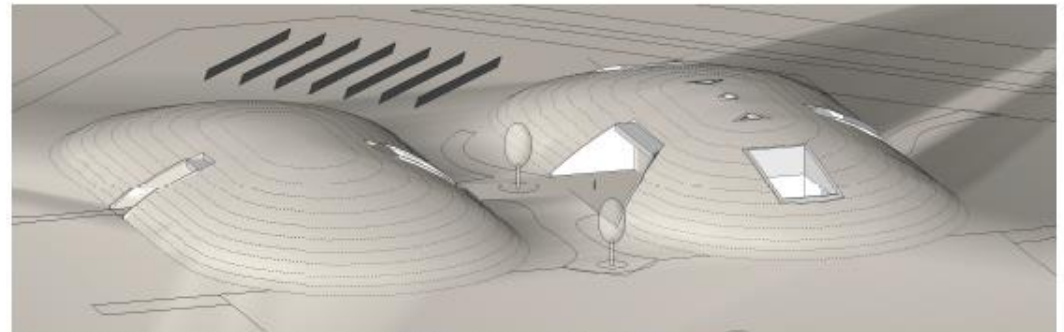
VISITORS CENTRE PLAN



VISITORS CENTRE + ADMIN OPTION 1 (preferred)



VISITORS CENTRE + ADMIN OPTION 2



VISITORS CENTRE + ADMIN OPTION 3



Australian Government

---

**ansto**

---

**Questions**

---

[www.ansto.gov.au](http://www.ansto.gov.au)