

National Radioactive Waste Management Facility Project

Opportunities for Local Participation Presentation

May 2018

Stages across the project

Characterisation Study

- Current technical assessment of all three nominated sites
 - Using local business/ services
 - Second stage on preferred site to commence from end of 2018

Early Works

- Works to enable Construction to commence
 - To occur on the selected site only
 - May be a part of the construction works or undertaken prior

Construction Works

- Coordinated by a Head Contractor
 - To occur on the selected site only
 - To commence once regulator approvals and operating license obtained

Operations and Maintenance

- Day to day running of the new facility
 - Roles to be reviewed and discussed by ANSTO
 - Services to be undertaken once the Construction Phase has been successfully completed

Characterisation Study

Works are being undertaken presently and have use local businesses:



Activity	Status	Service	Lyndhurst/ Napandee sites Local supplier	Wallerberdina site Local supplier
Excavation of investigation test pits	Completed	Civil contractor with Excavator	JMAC Logistics, Kimba	Hilder Earthmovers, Hawker
Drilling boreholes	Ongoing Wallerberdina only	Supply of water cart	JMAC Logistics, Kimba	JMAC Logistics, Kimba
Fieldwork	Ongoing	Field catering	Kimba Gateway Hotel	Viliwarinha Yura Aboriginal Corporation
Fieldwork	Ongoing	Cultural heritage monitoring	n/a	Viliwarinha Yura Aboriginal Corporation
Establishment, reinstatement	Ongoing	Track maintenance, setup and cleanup of work areas	JMAC Logistics, Kimba	Smulders contracting, Hawker
Groundwater investigation	Ongoing	Survey of wells	Veris, Port Augusta	Veris, Port Augusta
Ecological survey	Complete	Liaison during survey by AECOM (no technical commission at this stage)	Ecologists from Ecological Horizons	Viliwarinha Yura Aboriginal Corporation
All field activities	Ongoing	Accommodation, fuel supply, vehicle repairs	Various suppliers, Kimba	Various suppliers, Hawker

Early Works

Description:

Works to enable the construction phase to be undertaken.

This phase will include upgrades to or new roads and services to allow access to the site and utilities for contractor use.

Services

Contractor works to the site to enable services to plant and equipment to enable the construction phase to be undertaken:

- Power
- Communications (mobile phone repeater towers, internet)
- Water supply

Civil Infrastructure

- Excavation
- Pipelines
- Roadwork
- Associated plant and equipment
- Materials
- Labour

Support Services

- Accommodation
- Catering
- Entertainment
- Services Contracting (communications, power, water)

Construction Works

Construction Company

Roles within the Construction company to assist with the management of the works:

- Project Management
- Site Management
- Labour
- Cultural Heritage Monitoring
- Environmental Monitoring
- Contract Administration
- Office Assistance

Trades

Subcontractors to undertake trade packages

- Services
- Linings
- Concrete
- Civil works
- Cladding
- Labour
- Security

Suppliers

Potential local materials supply

- Concrete batching
- Linings (plasterboard) and claddings (fibre cement sheet / steel sheet)
- Steelwork
- Water carting
- Timber
- Fitout

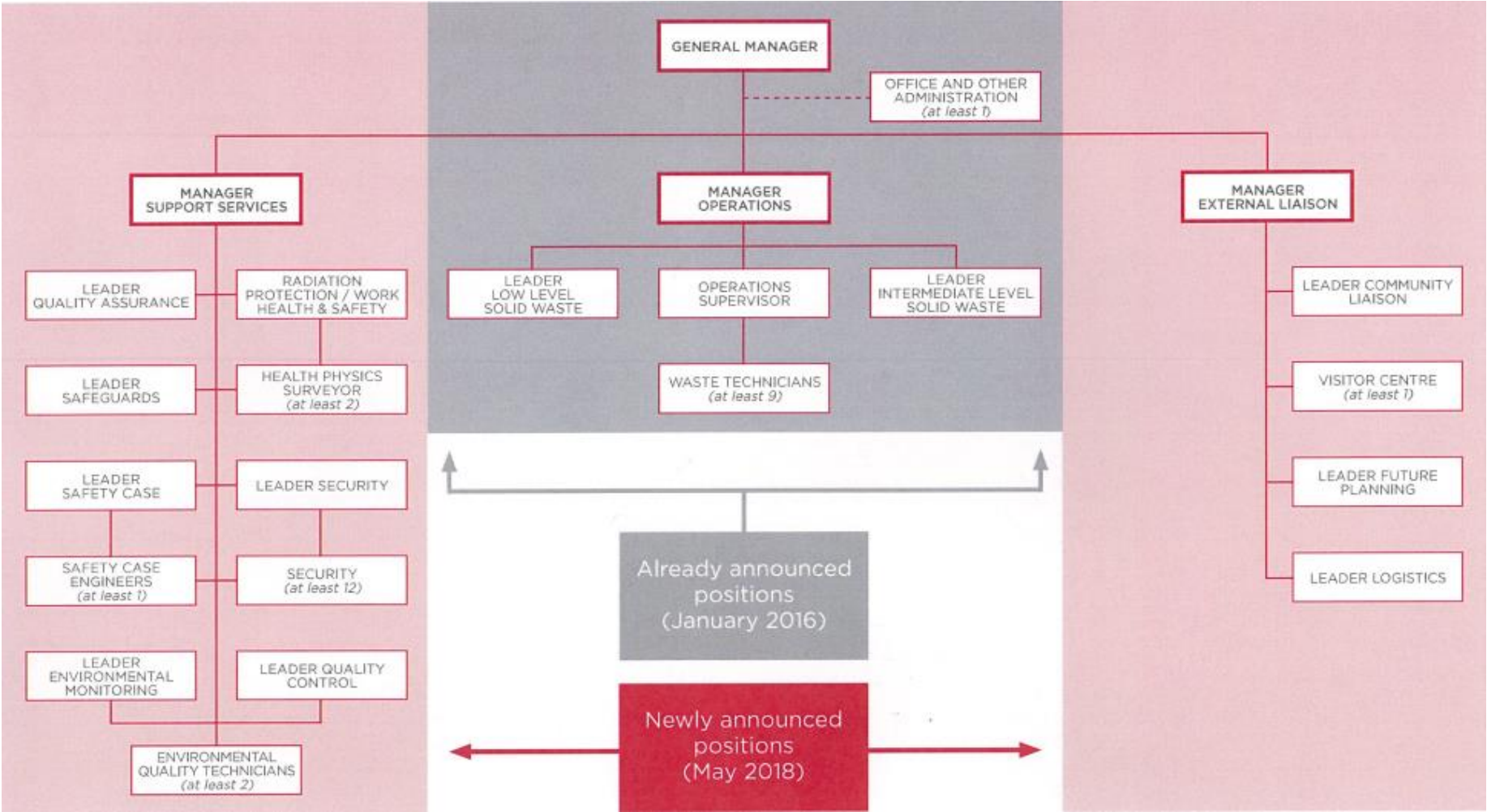
Supporting Services

- Accommodation
- Site Offices
- Catering
- Entertainment (bands & cinema)
- Clubs and associations
- Contractors – services and works associated with the Camp.

Operations and Maintenance

ANSTO

Review of future roles





AECOM Imagine it.
Delivered.